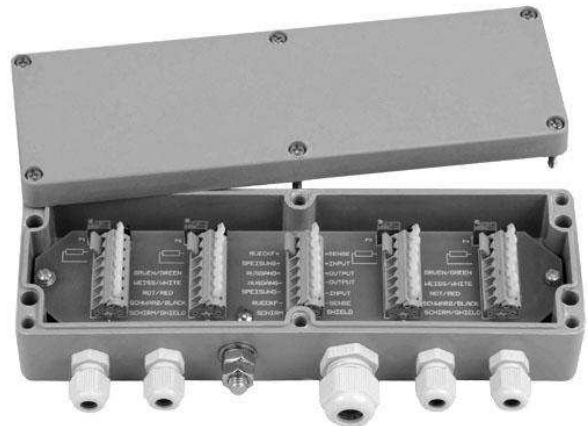


Connection box EZE49X000004

Polyester



Description

The polyester junction box is intended for the parallel connection of 3 to 4 force transducers or load cells.

Connection to the display device, or for evaluation of the weighing result, can be made via a shielded 6-wire cable if the connected electronics supports 6-wire technology, or via just a 4-wire cable where 4-wire technology is used.

The cable connection to the terminals inside the enclosure is via clamps.

One of the cable ducts is sealed if only 3 load cells are connected.

Corner correction is done using resistors and/or potentiometers.

Note

Cable gland M12x1.5 for cable diameter 3...6.5 mm

Cable gland M16x1.5 for cable diameter 5...10 mm

Features

- Variants for 3 to 4 load cells
- Stable housing for industrial application
- Cable connection via clamps
- Degree of protection IP 66

Applications

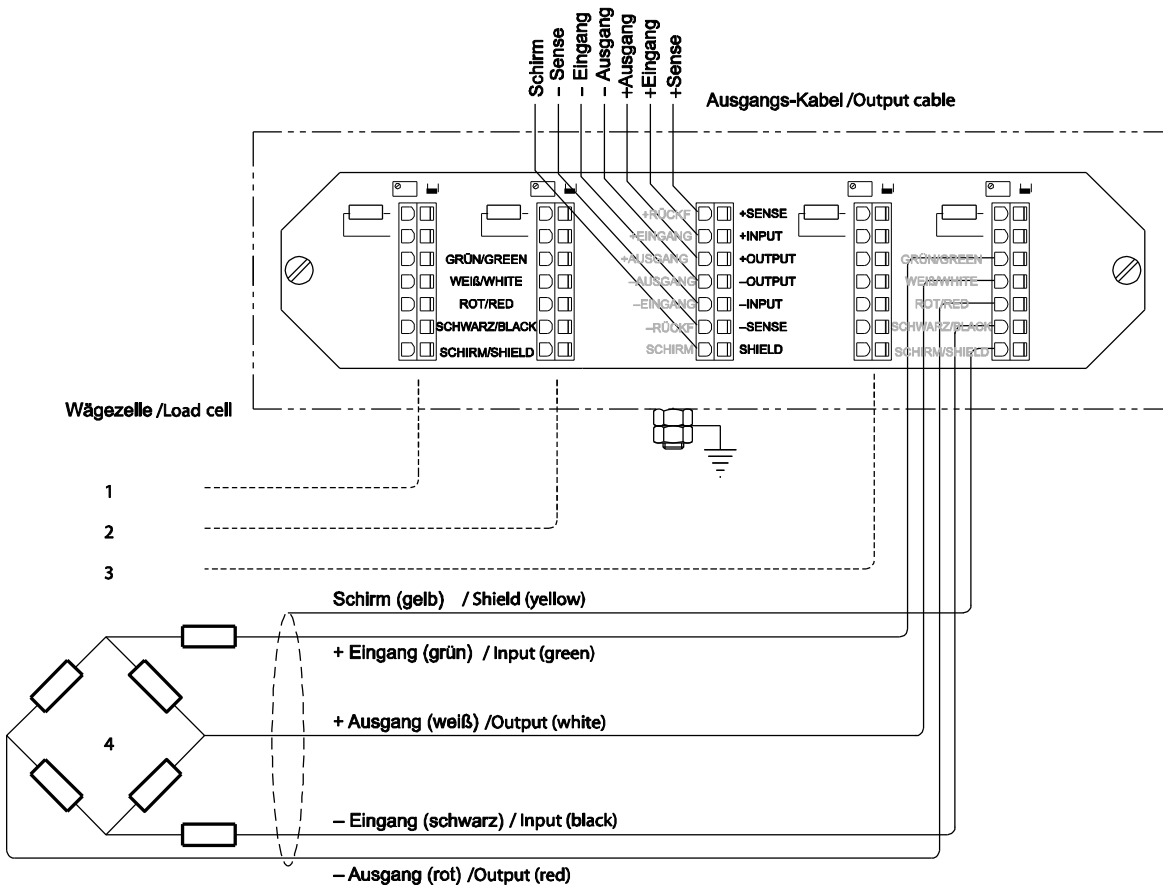
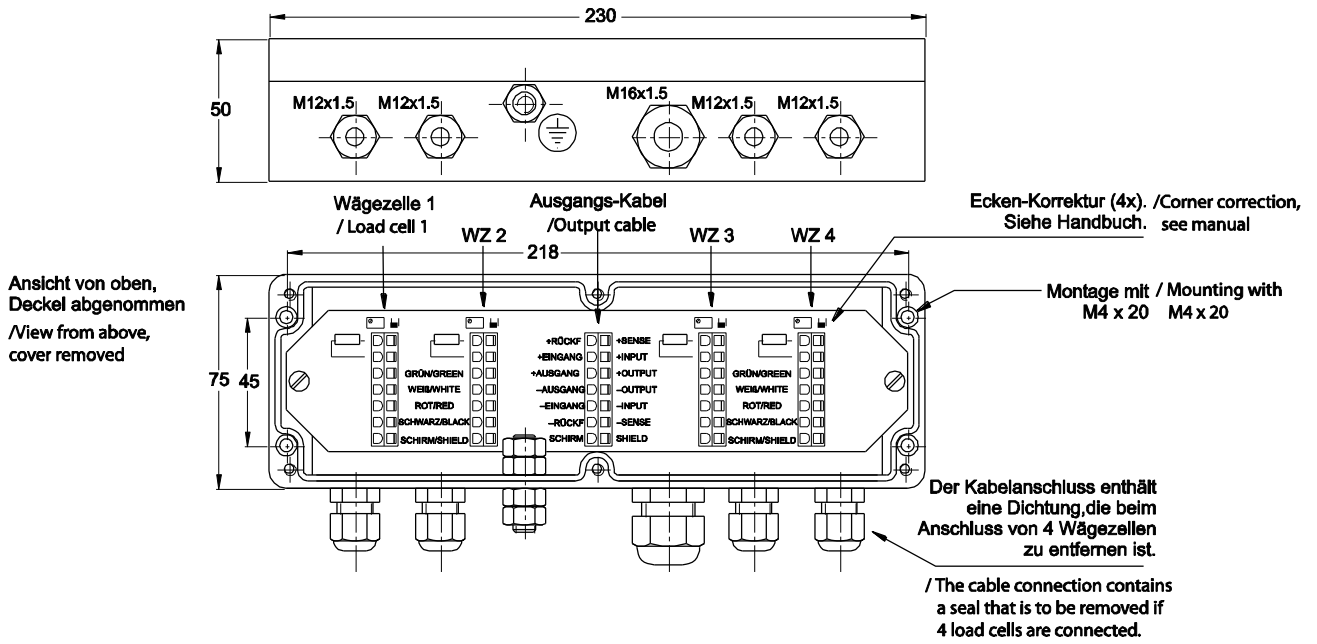
- Weighing-, test-, inspection- and safety equipment

Specific information

- Screwed cable gland M12x1.5 for cable diameter 3 ... 6.5 mm
- Screwed cable gland M16x1.5 for cable diameter 5 ... 10 mm

Model: EZE49X000004

Dimensions



Subject to technical changes